

Cherries to pick Cherries to grow



York
METALCRAFTERS

JOHN WRIGHT

\$1.50

22-010 Always Did 'Spise a Mule. Mule turns clear around and kicks boy over. (Original produced 1879.) 10" long.



22-210 Bucking Buffalo. Buffalo boosts man up the tree while raccoon sneaks back into tree with your penny. (Original produced 1888.) 7 1/2" long.



22-250 Kicking Cow. Bossie kicks over her milker along with his pail and your penny which drops inside the bank. (Original produced 1888.) 9 3/4" long.



22-280 Dentist. As dentist tilts backwards, coin falls from his pocket into slot in base of bank. (Original produced 1880.) 9 1/2" long.



22-160 Tammany. Put a penny in Boss Tweed's hand. He'll nod his head and the money's gone. (Original produced 1873.) 5 1/2" high.



22-040 Boy on a Trapeze. Put a penny on boy's cap. He spins around the bar and drops penny into bank. 9 1/4" high.



22-100 The Magician. Put a penny on the table, push lever. Magician nods his head, lowers his hat, and makes the penny disappear. (Original produced 1882.) 8" high.



The Extraordinary MECHANICAL BANKS

Exclusive certificate of authenticity. Only John Wright mechanical banks come with a certificate of authenticity from the Book of Knowledge collection. It's your customers' guarantee that these banks are just what they purport to be — exact hand-crafted, hand-painted duplicates of the originals.

Expensive because they're hand-crafted. Saleable because nobody can resist the fun. Let's face it, even an expensive gift can be commonplace. Stuff. Which is okay, if all your customer wants to say is: "I spent a lot for this." But, most people want to say more. And, John Wright mechanical banks give them a chance.



22-020 Kicking Mule. Put a coin in the jockey's mouth, press a lever. Mule throws jockey and coin goes through slot in base. (Original produced 1879.) 10" long.

Certificate of Authenticity

This mechanical coin bank is an authentic reproduction of the original antique in the collection of The Book of Knowledge. The very same processes and technique which created the original have been employed in the making of this fine reproduction. Molds were painstakingly made from the original bank, hand-cut in sand, and this reproduction then hand-assembled and hand-decorated.

Therefore, it is much more than merely a coin bank — more than a toy. It is a replica of a product of American ingenuity and craftsmanship. It is, indeed, a collector's item with historical interest and value.

Treasure it!

Ellen V. McLaughlin
 Editor-in-Chief
 THE BOOK OF KNOWLEDGE

Put a penny in this clown's hand, and he'll swallow it and roll his eyes.

22-300 Humpty Dumpty. 7½" high. (Original produced 1880.)

TOP SELLER



22-090 Leapfrog. One fellow leaps over the other one, hits a lever that drops your coin into the tree. (Original produced 1891.) 7½" long.



22-310 Uncle Remus. Press head of the chicken, and watch Uncle Remus dart into his shack with your penny. 5½" long.



22-150 Punch & Judy. Punch takes a whack at Judy, and she deposits the penny. (Original produced 1882.) 7½" high.



22-110 Organ. Turn the crank. Children dance, bells chime, and monkey tips his hat while dropping penny into bank. (Original produced 1882.) 7½" high.



22-220 Cabin. Pull the whitewash brush on this trapper's cabin. He'll somersault and kick your penny through the roof. (Original produced 1885.) 4¾" long.

The Extraordinary MECHANICAL BANKS

How to turn a Hometown Battery Bank into a cherry.

Multiply the fun of Father's Day gift-giving (not to mention the number of your sales)... offer a free ticket to the ball game with each Hometown Battery Bank purchase.

All the pieces. Count 'em.



22-080 Jonah and the Whale.

The boatman tries to throw Jonah to the whale, but the whale gets your coin instead. (Original produced 1880.) 10 1/2" long.



The penny goes so fast you might never see it if it weren't for this special photo.

Look closely.

The pitcher tosses the penny through the air (about 5"); the batter turns, swings and misses, Penny goes into bank through catcher.

22-270
Hometown Battery
9 1/2" long.

22-140

Trick Pony.

Put penny into pony's mouth: he arches his neck, nods his head and drops coin into manger. (Original produced 1885.) 8" high.



22-290 Bulldog. Wag the bulldog's tail and watch him snap as he gobbles up your coin. 7 1/2" high.



22-120 Owl. Pull the lever and watch the owl turn his head and deposit your penny. (Original produced 1880.) 7 1/4" high.



22-240 Cat & Mouse. The grinning pussycat stands on his head to drop your money into the bank. (Original produced 1891.) 11" high.

22-190 William Tell. William fires pennies into bank which makes a bell ring. (Original produced 1896.) 10 1/4" long.



22-070 Indian & Bear. Load the Indian's gun with a coin. He'll fire it into the bear which snaps its jaws. (Original produced 1888.) 10 1/2" long.



22-030 Artillery. Cannon goes off at gunner's signal and shoots the penny into the fort. (Original produced 1892.) 8" long.



22-180 Uncle Sam. Push the lever and watch Uncle Sam waggle his whiskers and drop your penny into his carpetbag. (Original produced 1886.) 11 1/4" high.



22-260 Creedmore. Named for a National Guard rifle range on Long Island. Man shoots penny to target. (Original produced 1877.) 10" long.



22-230 U.S. Cannon. This bank commemorates Spanish-American War. Cannon brings down ship's mast and your coin. (Original produced 1898.) 8 3/4" long.



22-170 Teddy & the Bear. Rough Rider fires a penny into the tree, and a big, fierce bear pops out. (Original produced 1907.) 10 1/2" long.



Not a novelty but clever all the same. Mechanical banks sell today for the same reasons they did 100 years ago. The imaginative design, the ingenuity of the working parts, and the painstaking craftsmanship.

Click! Ker-pling! One try turns the curious browser into a delighted customer with cash in his hand and a remarkable gift under his arm.



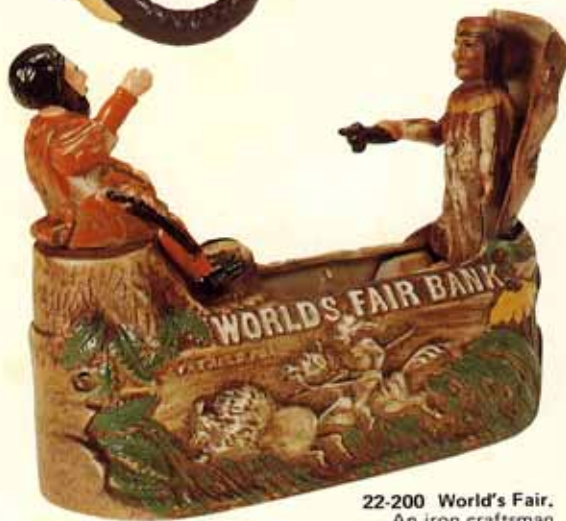
22-000 Royal Elephant. Pull his tail and the elephant deposits your penny in the seat on his back. 8 3/4" long.



22-050 Eagle. Mother eagle feeds your penny to baby eagles. (Original produced 1883.) 8" long.



22-130 Paddy & the Pig. The pig kicks your penny to Paddy who catches it on his tongue, swallows it and rolls his eyes. (Original produced 1882.) 7 3/4" high.



22-200 World's Fair. An iron craftsman first produced this bank to commemorate Columbus' landing. And he displayed it at the Columbian Exposition. The Indian rises out of the ground, and your penny rolls between Columbus' feet into the bank. 8" long.



Each Penny Bank is packed with the exclusive John Wright certificate, to identify them as collectors' items in their own right.



22-340 Tennis Players.
Place penny on woman's racket. She does 180° turn, lobbing penny over net. Man swings, misses as penny drops into bank. 10¼" long.



22-350 Uncle Sam & Arab.
Uncle Sam's jaw drops as he deposits the penny into the oil barrel. The Arab's beard moves, indicating his appreciation. 11" high.



22-330 Bricklayer.
Put penny on hod. Hod carrier throws it over wall and into the bank as mason lays brick. 7½" long.



22-060 Santa.
Put a penny in Santa's hand and he'll throw it down the chimney. 6" high.

Although these two mechanical banks are not from the Book of Knowledge collection, both are antique reproductions.

The Extraordinary MECHANICAL BANKS

The original John Wright Penny Bank™ Collection. John Wright's collection of original mechanical banks is hand-crafted and hand-painted with the same skill that characterizes the mechanical banks of yesteryear. The Penny Bank collection offers new additions to a very old tradition.



22-320 Auto. Lay the penny on the hood, turn the crank, and watch your penny go right through the windshield. 8½" long.

23-000 Merry-Go-Round Bank
4½"



...A good-natured opinion-expresser for the executive.



29-036 Rubber Band Gun
7½"



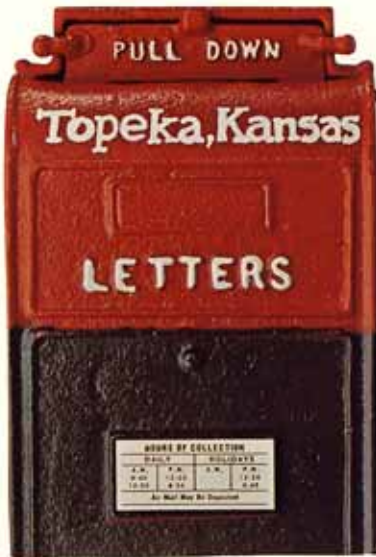
23-090 Liberty Bell Bank
4"



29-020 Animal Puzzle
6"

STILL BANKS

How to turn a Still Bank into a cherry.
Use one on your counter to collect donations for a local charity organization or children's hospital. Good PR and a good way to draw attention to the product.



23-080
Mailbox
Bank
4"

"I had John Wright hand-letter the name of my hometown, now this mailbox bank sells twice as fast. They'll do it at the rate of 15¢ for every 12 letters."

23-100
Indian Bank
6"



23-150
Clown Bank
6"



23-200
Horse Bank
7 1/4"



23-270
Pony Bank
4 1/4"



23-160
Sheep
Bank
5 1/2"

23-260
Pig Bank
4 1/4"



23-170
Rabbit Bank
4 1/4"



23-250
Safe Bank
4"



23-060
Pig Bank
4 1/4"

23-020
Cat Bank
4 1/4"



23-210
Elephant
Bank
5 1/4"



THE JOHN WRIGHT "EXTRAS."

WORKMANSHIP.

The difference between a John Wright gift and a commonplace gift.

John Wright hand-paints and hand-finishes its products. The iron is hand-cast by pouring molten metal into a hollow impression of moist sand. It's a 3,000 year-old method that's still done basically the same way — by skill and intuition.

Pick up a John Wright product, and you'll see why it sells.

There's a quality your customers can actually see and feel. Something solid. Substantial. The feel, the look, the texture of hand-craftsmanship. The smooth, yet somehow nubby finish. The intricate detail of hand-assembled, hand-painted castings. Each piece doing exactly what it's supposed to do.

FREE LOGO PLAQUES.

Attractive John Wright and York Metalcrafters logo plaques may be ordered (free of charge) by using these product numbers:

- 80-200 John Wright plaque
- 80-201 York Metalcrafters plaque



NATIONAL SALES FORCE.

John Wright/York Metalcrafters sales representatives and showrooms are located strategically throughout the United States.

SALES REPRESENTATIVES:

Mid-Atlantic States

Larry Longlott
Lincoln Drive
Wernersville, PA 19565
Ph. 215-678-3468

Dick Lutz
1505 Bronwyn Rd. T-3
Richmond, VA 23233
Ph. 804-740-4088

John Friedman
8 Wildwood Drive
Dix Hills, NY 11746
Ph. 516-643-4512

Kentucky, Tennessee, Mississippi

Evans Coleman & Associates
Drawer R
Danville, KY 40422
Ph. 606-236-5058

Florida

Wittkamp & Associates
4940 NW 39th Street
Ft. Lauderdale, FL 33319
Ph. 305-733-6897

Montana, Idaho

William D. Uren
East Lake Shore
Big Fork, MT 59901
Ph. 406-982-3202

SHOW ROOMS

Conn, RI, Mass, Maine, NH

Brass Smith House
The Center Showroom # 168
59 Middlesex Turnpike
Bedford, MA 01730
Ph. 617-275-1815

Midwest

Krancer & Frank, Inc.
Suite 1415 Merchandise Mart
Chicago, IL 60654
Ph. 312-321-1415

David Lippert Associates
Upper Midwest Trade Center
Suite 165
10301 Bren Road West
Minnetonka, MN 55343
Ph. 612-932-7165

Walter R. Gibian Associates
Tri State Gift Mart — Rm 714
106 N. High Street
Columbus, OH 43215

Southwest

Hitchcock & Frank, Inc.
Amigo Gift Mart, Rm 2-206
6899 Executive Drive
Kansas City, MO 64120

Hitchcock & Frank, Inc.
2840 Dallas Trade Mart
Dallas, TX 75207
Ph. 214-744-2840

Hitchcock & Frank, Inc.
Denver Merchandise Mart, Rm 2002
451 E. 58th Avenue
Denver, CO 80216

West

Lord Associates
520 W. 7th Street — Suite 912
Los Angeles, CA 90014
Ph. 213-627-0911

Sebring Sales Co.
The Showplace — Rm 50
2 Kansas Street
San Francisco, CA 94103
Ph. 415-626-5666

George Chew Associates
6100 Fourth Avenue South — Rm 126
Seattle, WA 98108
Ph. 206-762-7048

Southeast

Romer & Nolan Associates
Atlanta Merchandise Mart — Rm 10-L-4
Atlanta, GA 30303
Ph. 404-523-4327

Dan Spinella Associates
Charlotte Merchandise Mart
Rm F210
2500 E. Independence Blvd.
Charlotte, NC 28205

Mich.

Walter R. Gibian Associates
Gateway Center Building — Rm 701
1101 Washington Blvd.
Detroit, MI 48226

PRODUCT HANG-TAGS.

Our products sell even better when your customers know their history.

Every John Wright product comes with its own informative hang-tag. They tell the fascinating stories behind the products. The colorful history, the anecdotes, the folklore. Surefire attention-getters that will spark sales by turning browsers into customers.

ORDERING.

It's never been easier.

You'll notice we've combined the John Wright and York Metalcrafters product lines this year. Ordering from one catalog is easier for you and easier for us.

All prices shown are wholesale and subject to change without notice.

Terms: 30 days net - accounts overdue more than 30 days subject to 1½% finance charge.

\$100 minimum opening order for new accounts.

Minimum re-order \$50⁰⁰.

Merchandise sold F.O.B. Wrightsville, Pa. 17368.

Return goods policy:

1. Request RETURN GOODS LABEL from factory, and state reason for wishing to return goods.
2. Upon receipt of label display it prominently on carton containing returned goods.

CUSTOM CRESTING.

At John Wright, we work by hand.

So, we can put logos, names or just about anything else on our York Metal products. And,

for less money than you'd think. It's not just ordinary engraving, either. It's a permanent part of the casting.

Art & Tooling charges:

One-time art & tooling charge on initial order. Art and tooling is filed for future reorders.

Drinking vessel (one side)	\$40.00
Partial rim on plate (½ way around)	40.00
Full rim on plate	50.00
Center of plate	50.00
Center of plate w/full or partial rim	100.00

Art Work:

Speculative art work invoiced at \$50.00.

Charge deducted from final invoice upon receipt of firm signed order.

Minimum:

36 pieces per item. We reserve the right to ship 10% over or under actual order. Customer will be charged only for actual quantity shipped.

Crested Prices:

Hollowware, mug and goblets: add \$.50 each to the wholesale price. Plates and chargers: add \$1.00 each to the wholesale price.

Types of Crests:

1. **Rim crest** — placed on rim of plate or charger. (If it extends more than halfway, it is considered a full rim crest.)
2. **Center crest** — placed in the well of plate or charger (usually in the center).
3. **Side crest** — placed on mugs, goblets and hollowware. The crest will be placed on the side and may be oval, round, square or rectangular.

York
METALCRAFTERS

JOHN WRIGHT

JOHN WRIGHT

York
METALCRAFTERS

(717) 252-1561

P.O. BOX 40 • WRIGHTSVILLE, PA 17368

ORDER FORM
EFFECTIVE 1-2-78

MECHANICAL BANKS

22-000	Elephant	12.50	27
22-010	Mule	20.00	27
22-020	Mule/Jockey	18.50	27
22-030	Artillery	19.00	27
22-040	Boy on Trapeze	19.00	27
22-050	Eagle	20.00	27
22-060	Santa Claus	15.00	27
22-070	Indian & Bear	20.00	27
22-080	Jonah & Whale	22.00	27
22-090	Leap Frog	19.00	27
22-100	Magician	17.00	27
22-110	Organ	19.00	27
22-120	Owl	10.00	27
22-130	Paddy & Pig	19.00	27
22-140	Trick Pony	16.50	
22-150	Punch & Judy	19.00	
22-160	Tammany	15.00	29
22-170	Teddy & Bear	22.00	29
22-180	Uncle Sam	22.00	29
22-190	William Tell	23.00	29
22-200	Worlds Fair	19.00	29
22-210	Bucking Buffalo	15.00	29
22-220	Cabin	12.00	
22-230	U.S. Cannon	12.00	
22-240	Cat & Mouse	18.00	30
22-250	Kicking Cow	20.00	31
22-260	Creedmoor	20.00	31
22-270	Hometown Battery	22.00	31
22-280	Dentist	20.00	31
22-290	Bull Dog	18.00	31
22-300	Humpty Dumpty	16.00	31
22-310	Uncle Remus	17.00	31
22-320	Auto	14.00	31
22-330	Brick Layer	20.00	31
22-340	Tennis Players	30.00	
22-350	Uncle Sam & Arab	30.00	

BANKS

23-000	Merry-Go-Round	4.75	32
23-020	Cat	2.50	32
23-060	Pig	2.50	32
23-080	Mailbox	3.00	32
23-090	Liberty Bell	2.50	32
23-100	Indian	3.00	32
23-150	Clown	3.00	
23-160	Sheep	2.50	
23-170	Rabbit	2.50	33
23-200	Horse	4.25	33
23-210	Elephant	4.00	33
23-250	Safe	4.00	33
23-260	Pig	2.00	33
23-270	Pony	2.50	33

JOHN WRIGHT

Collectibles





A Touch of Americana adds Drama to any Decor.

- | | |
|--|-------------------------------------|
| (1) 20-415 — Hook and Ladder Circa 1895, 32" | (7) 20-030 — Fire Engine, 13" |
| (2) 20-040 — Hook and Ladder, 15 ¼" | (8) 20-120 — Amish Buggy, 10" |
| (3) 20-440 — Pumper, 22" | (9) 20-403 — Crash Car, 4 ½" |
| (4) 20-060 — Ice Wagon, 9 ½" | (10) 20-401 — Fordson Tractor, 4 ¾" |
| (5) 20-410 — Santa Sleigh, 16" | (11) 20-180 — Auto, 4" |
| (6) 20-006 — Locomotive & Tender, 12" | |

Large selection of uncataloged collectibles are available. Write for information.

The John Wright Company, N. Front Street, Wrightsville, PA 17368.



- (1) 22-170 — Teddy & the Bear (1907), 10½" long. Teddy fires a penny into the tree and a big, fierce bear pops out.
- (2) 22-000 — Royal Elephant, 8½" long. Elephant deposits your coin in his seat.
- (3) 22-180 — Uncle Sam (1886), 11¼" high. Watch Uncle Sam waggle his whiskers and drop your coin into his bag.
- (4) 22-300 — Humpty Dumpty (1880), 7½" high. Place coin in clown's hand and he'll swallow it and roll his eyes.
- (5) 22-130 — Paddy & the Pig (1882), 7¾" high. Pig kicks coin, Paddy swallows it and rolls his eyes.
- (6) 22-270 — Hometown Battery (1888), 9¾" long. Pitcher tosses coin to the catcher, batter swings and misses so penny goes into bank through catcher.
- (7) 22-250 — Kicking Cow (1888), 9¾" long. Cow kicks over milker and pail while coin drops inside bank.
- (8) 22-060 — Santa Claus, 6" high. Santa throws coin down the chimney.
- (9) 22-335 — Golfer Bank, 9" long. The old pro putts coin as caddy raises flag.
- (10) 22-280 — Dentist (1880), 9½" long. As dentist pulls tooth, coin falls from his pocket into gas bag.
- (11) 22-020 — Kicking Mule (1879), 10" long. Mule throws jockey and coin in jockey's mouth goes through slot in base.

Large selection of uncataloged collectibles are available. Write for information.
 The John Wright Company, N. Front Street, Wrightsville, PA 17368.



Collectibles with Genuine Character.

- (1) 23-200 — Horse Bank, 7 ¼" high.
- (2) 23-305 — Aunt Jemima Bank, 12" high.
- (3) 23-320 — Dog Bank, 8" long.
- (4) 26-503 — Brass Horse Bank, 7 ¼" high.
- (5) 26-502 — Brass Dog Bank, 8" long.
- (6) 23-160 — Sheep Bank, 5 ½" long.
- (7) 23-020 — Cat Bank, 4 ¼" high.
- (8) 21-010 — Potbelly Stove, 5" (min. 4)
- (9) 21-090 — Bonnie Stove, 4 ½" Doll House Scale
1 ft. to 1 in.

- (10) 23-030 — Hen Bank, 6 ¼" high.
- (11) 23-080 — Mailbox Bank, 4" high. Mailbox can be
handpainted with the name of your
hometown.
- (12) 23-260 — Pig Bank, 4 ½" long.
- (13) 21-040 — Utensil Set
- (14) 23-170 — Rabbit Bank, 4 ¼" high.
- (15) 23-060 — Pig Bank, 4 ¾" high.

Large selection of uncataloged collectibles are available.
Write for information.